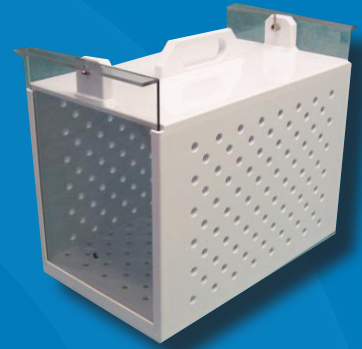




**LARGE ANIMAL TRANSPORT**



**GLOVEBOXES/ISOLATORS**



**PRIMATE TRANSPORT**



## LIFE SCIENCE



**RAT/MICE ISOLATOR**



**AUTOPSY HOOD**



**ANIMAL TRANSPORT**



**TEST STUDY CHAMBERS**

# LABORATORY CASEWORK

# PCI

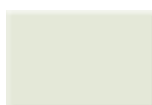


Plastic Concepts, Inc.'s Laboratory Casework is constructed of 1/2" thick, non-conductive, non-corrosive white polypropylene and can be ordered standard or custom designed according to your specific requirements.



Standard hardware (hinges, latches, drawers, suspension systems, handles and plumbing accessories) are all of polypropylene material. Additional hardware and drawer slide options are available upon request.

## COLOR OPTIONS:



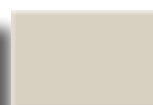
TRANSLUCENT



BLUE



BLACK



NATURAL



**PLASTIC CONCEPTS, INC.**  
**PHONE: (978) 663-7996**  
**[INFO@PLASTIC-CONCEPTS.COM](mailto:INFO@PLASTIC-CONCEPTS.COM)**  
**[WWW.PLASTIC-CONCEPTS.COM](http://WWW.PLASTIC-CONCEPTS.COM)**